

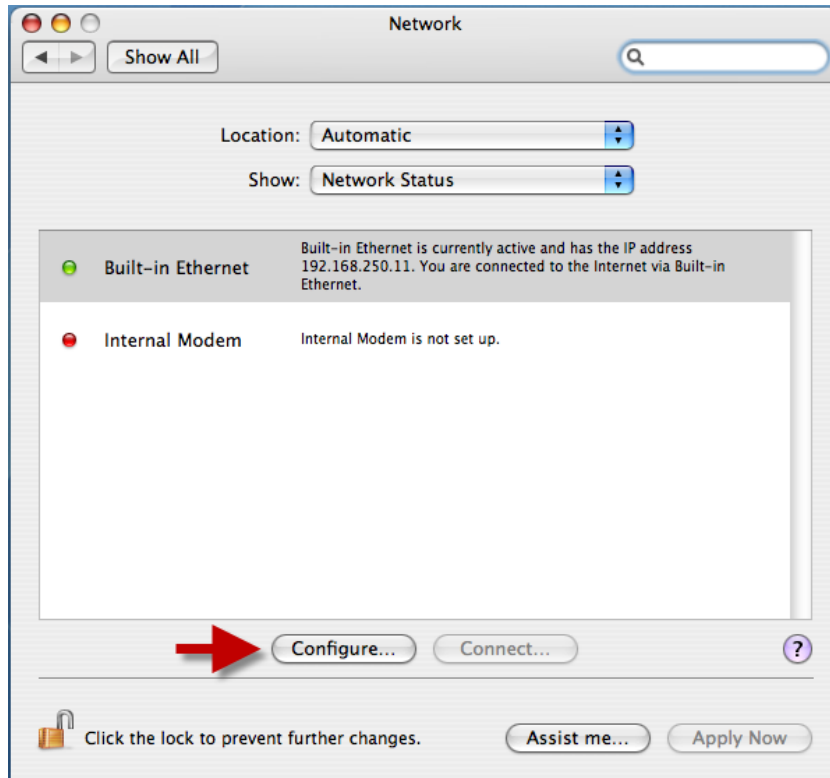
1. Click the blue Apple in the upper left hand corner of your desktop. Click “System Preferences.”



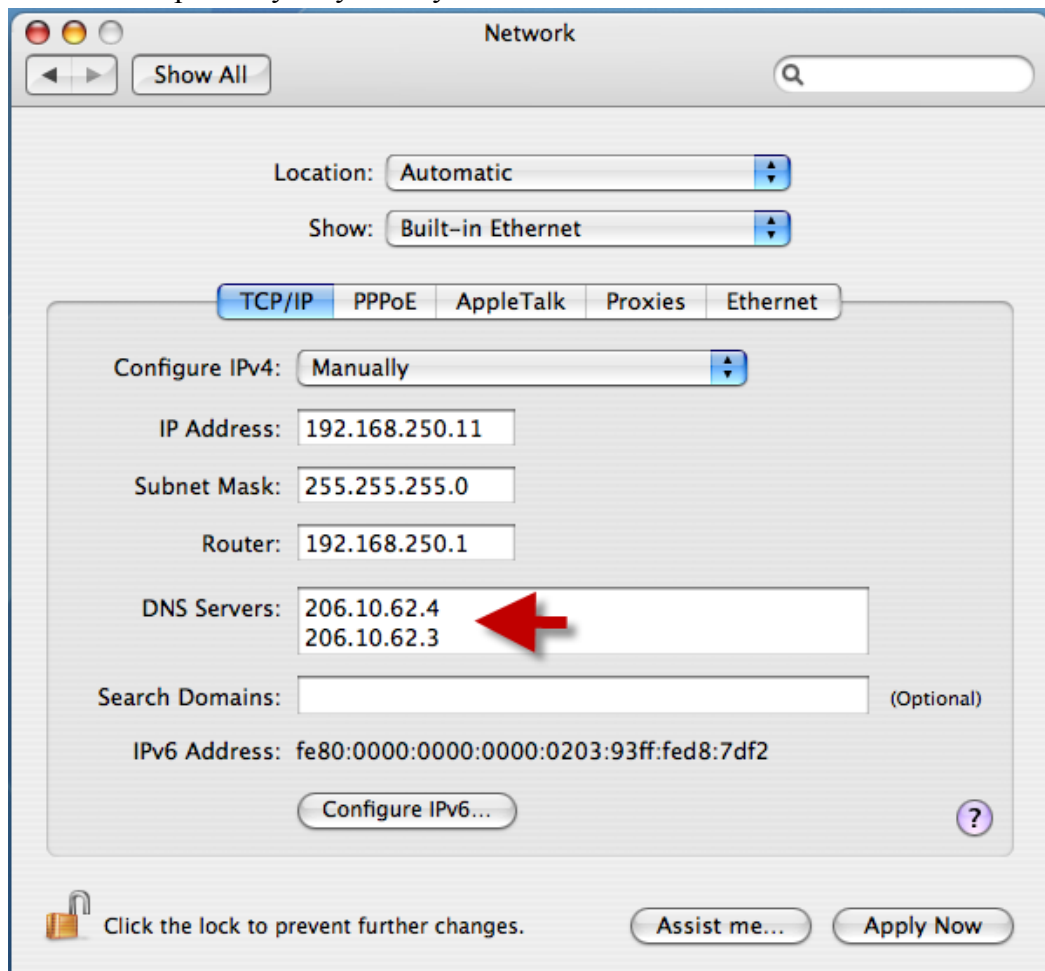
2. In the window labeled “System Preferences” double-click the icon labeled “Network.”



3. In the window labeled “Network”, highlight the entry “Built-in Ethernet” by clicking it. Click the “Configure” button at the bottom of the window.



4. A new window should appear labeled with an entry labeled “Configure IPv4”.
- Note: If this field is set to “Using DHCP”, you may close this window. You may disregard these instructions and do not need to continue.
- If this field is set to “Manually” locate the field labeled “DNS Servers”. The numbers “206.10.62.4” and “206.10.62.3” will be entered in here. Click into this text field and use the backspace key on your keyboard to remove both of these entries.



5. In the now empty text field labeled “DNS Servers” type in 66.242.88.4 and hit the Enter key on the keyboard. Type in the number 66.242.88.3. Click the button labeled “Apply Now.” You may now close this window.

