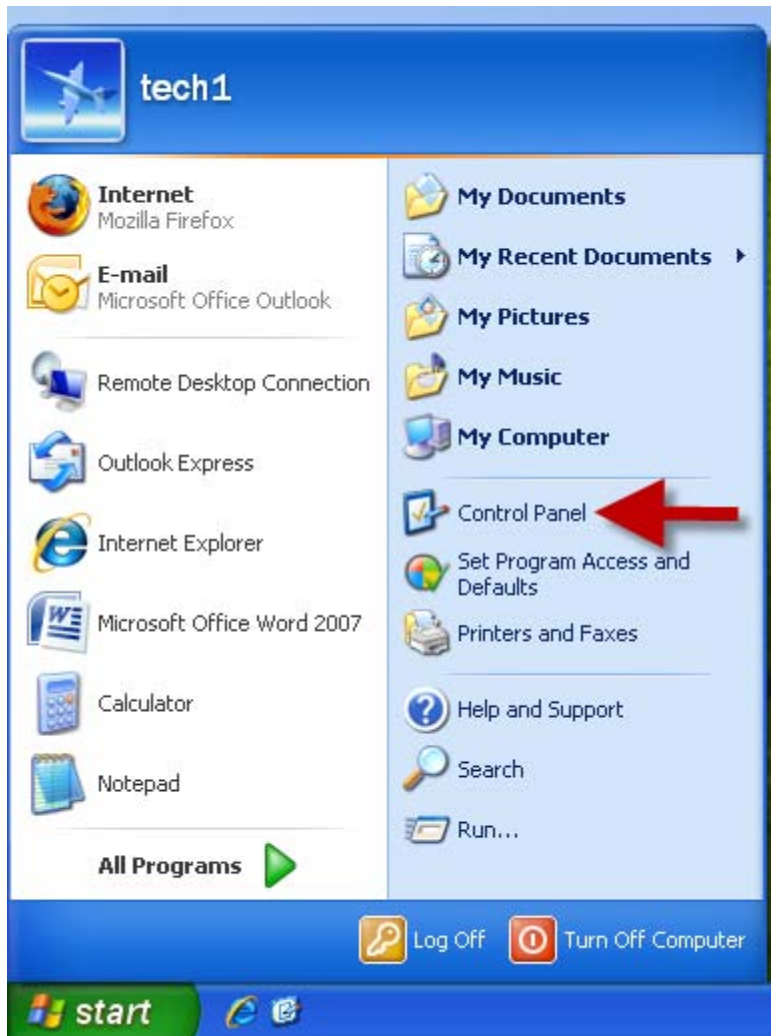
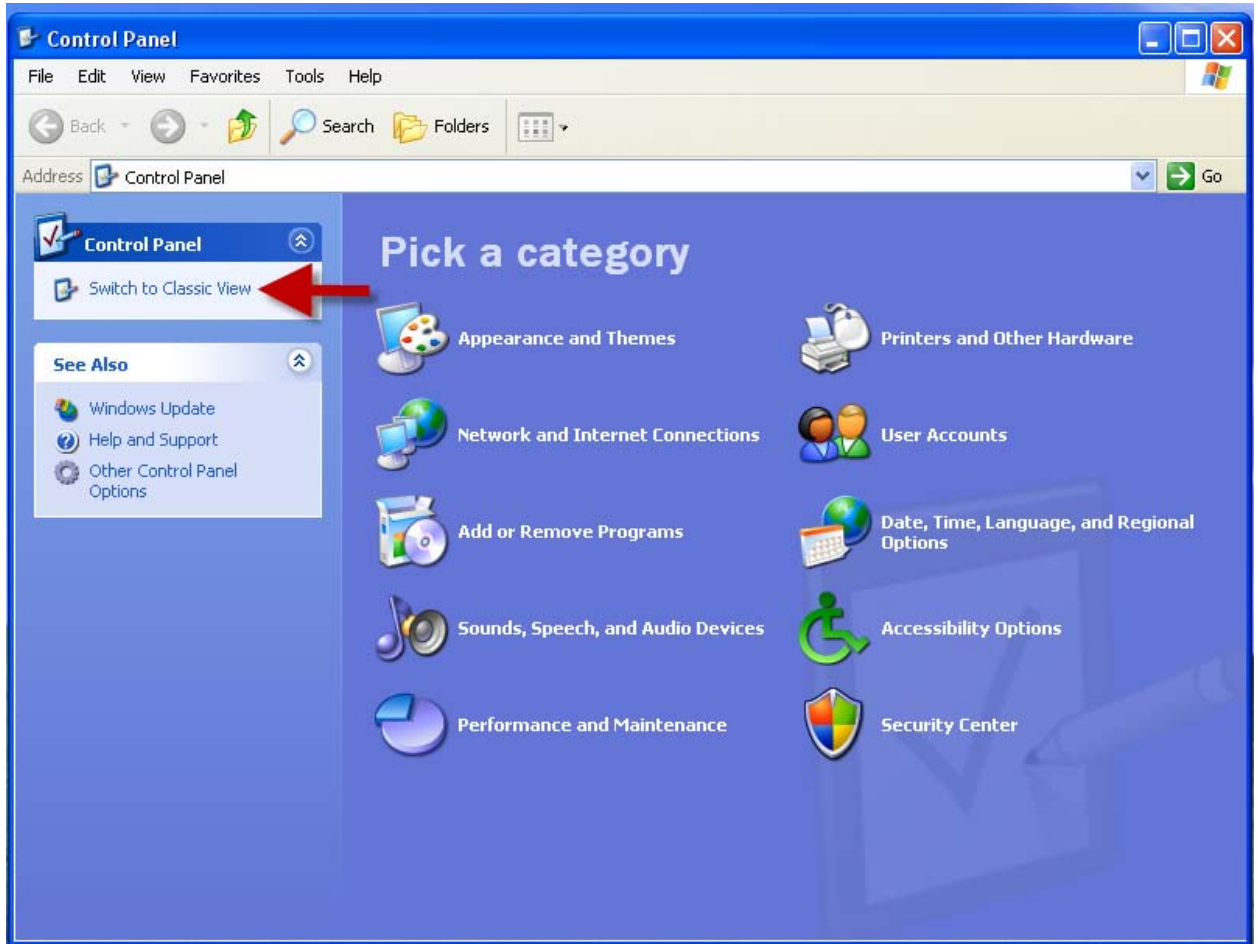


Instructions for Windows XP DNS Conversion

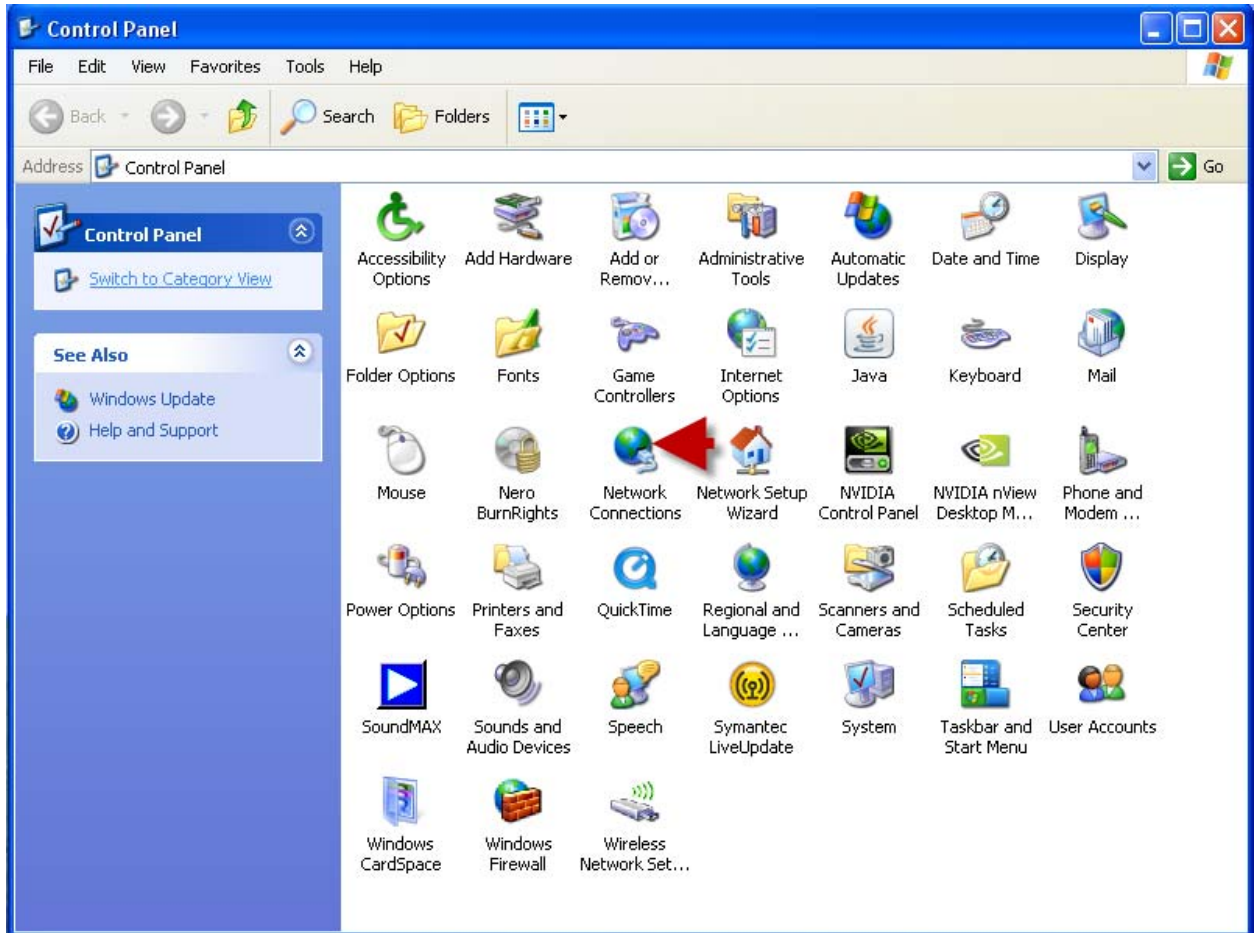
1. If you have a Local Area Network with several computers, or a small business and have someone administer your computer network, please contact them before making any changes.
2. Start up your computer as you normally would. Left click Start in the lower left hand corner of your computer screen. Locate and left click the icon labeled “Control Panel.”



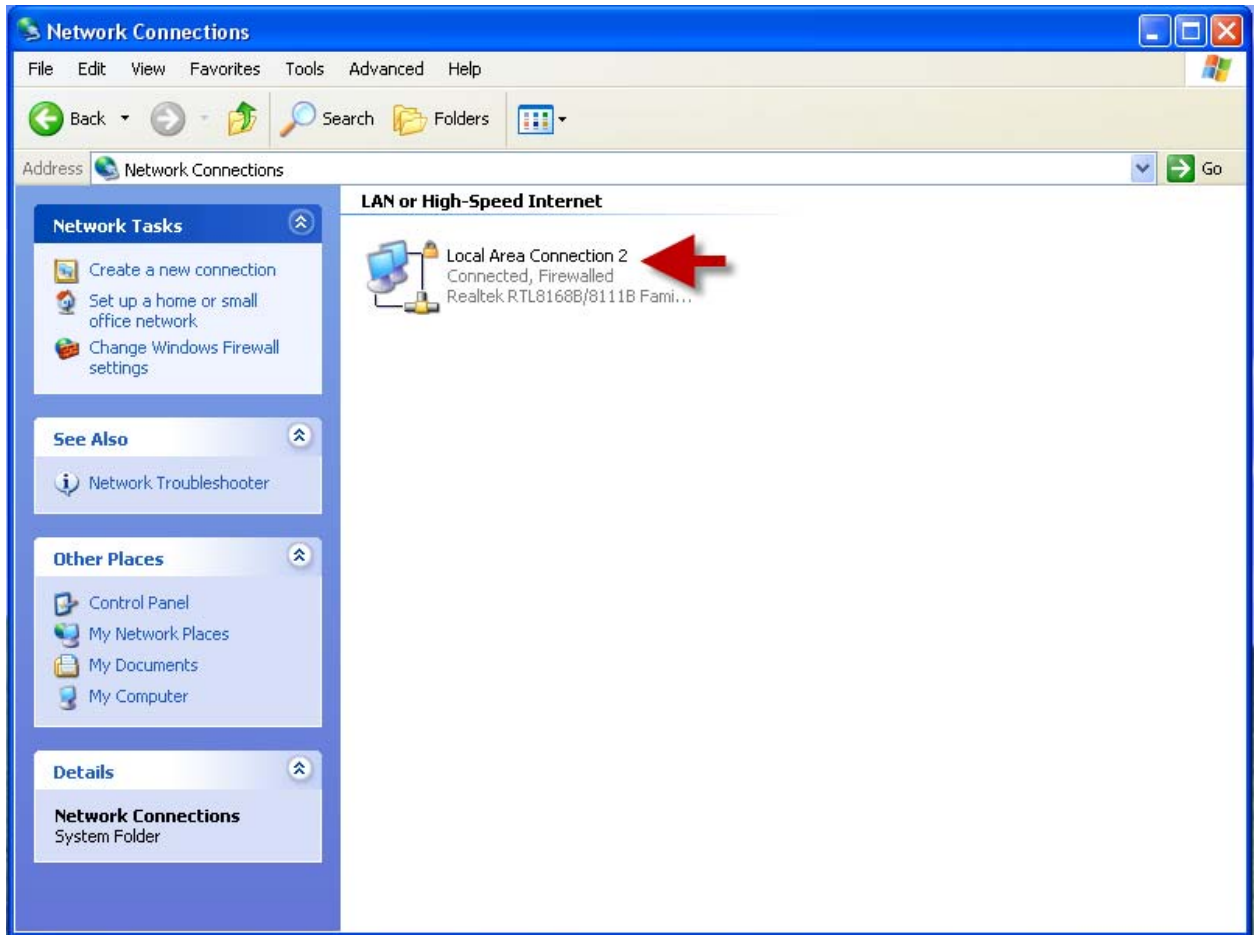
3. A new window, labeled Control Panel, will appear on your computer screen. In blue column to the left hand side of this window, there should be a link labeled “Switch to Classic View.” Left click this link.



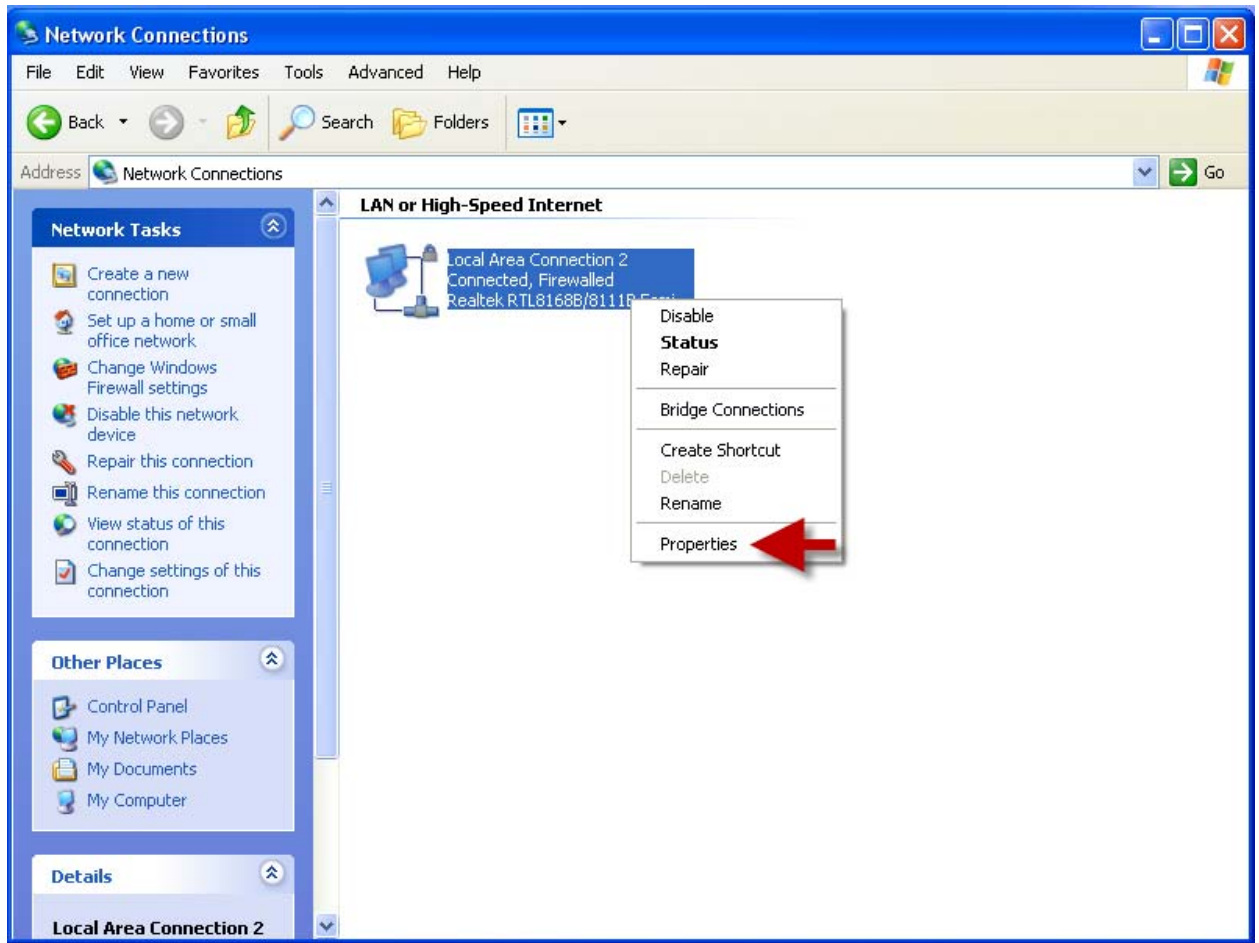
4. The background color of the Control Panel should switch to white and many icons should appear. Locate one labeled “Network Connections” and double-left click it.



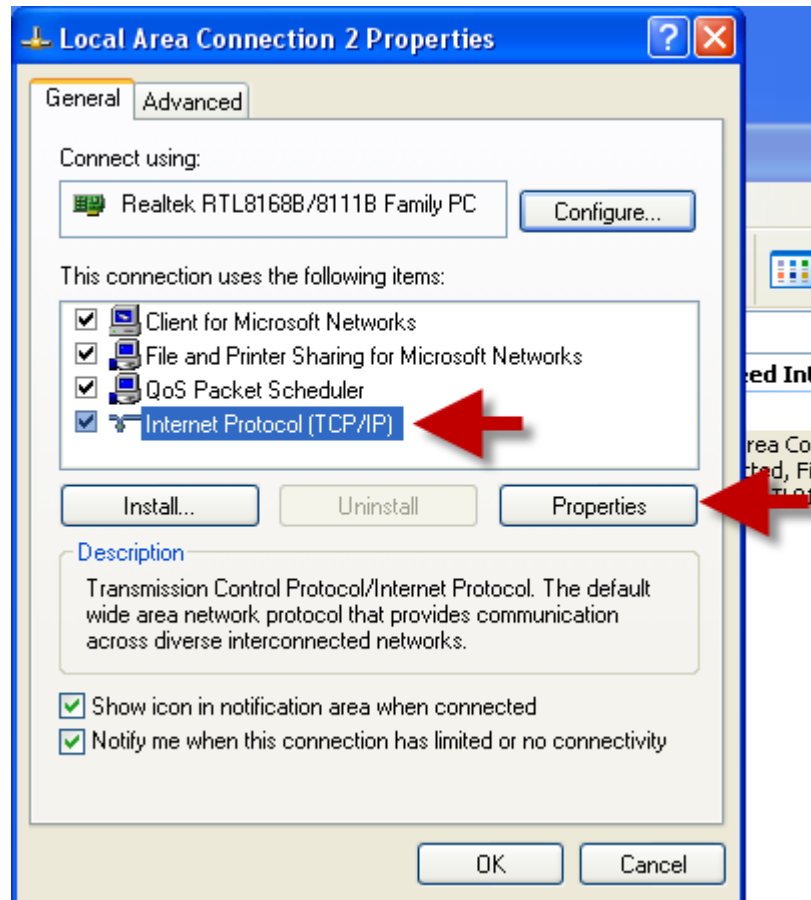
5. A new window, labeled “Network Connections”, will appear on your screen. Locate an icon label “Local Area Connection” and right click it.



6. A menu of options should appear on your screen for “Local Area Connection.” Single left click on the line of this menu labeled “Properties.”



7. A new window will appear on your screen labeled “Local Area Connection Properties.” One of the submenus on this window will read “This connection uses the following items” with a list of items following. On this list, locate a heading labeled “Internet Protocol (TCP/IP)” and *single* left click the heading so that it is highlighted in blue. Please ensure that the checkbox to the left of the heading remains checked. Once the heading “Internet Protocol (TCP/IP)” is highlighted in blue, left click the button labeled “Properties.”



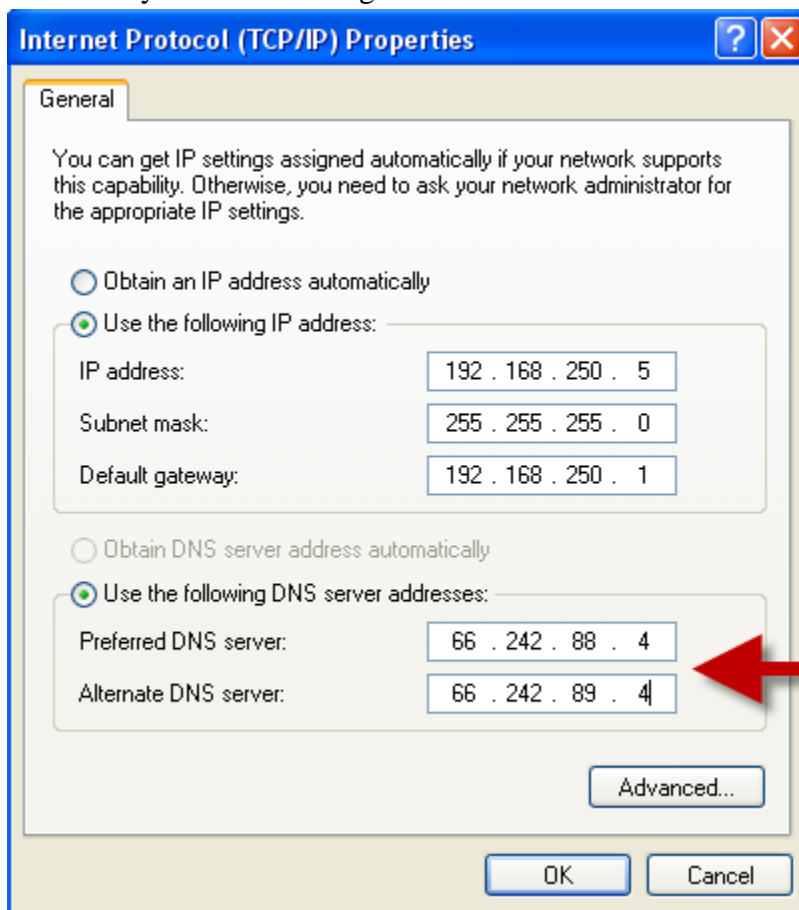
8. A new window will appear on your screen labeled “Internet Protocol (TCP/IP) Properties.”

Important: **If both “Obtain an IP address automatically” and “Obtain DNS server address automatically” are checked, click “OK” - You do not have to make any changes. Your Internet will continue to work properly.**

If not, please proceed. Towards the bottom of the screen, there will be a radial button dotted in labeled “Use the following DNS server addresses.” Beneath this label will be two lines labeled “Preferred DNS server” and “Alternate DNS server.” In the box to the right of the labels “Preferred DNS server” and “Alternate DNS server”, left-click into the text boxes where the numbers 206.10.62.4 and 206.10.62.3 are located and use the Backspace key on your keyboard to leave these text boxes blank.

The screenshot shows the "Internet Protocol (TCP/IP) Properties" dialog box with the "General" tab selected. The text inside the dialog reads: "You can get IP settings assigned automatically if your network supports this capability. Otherwise, you need to ask your network administrator for the appropriate IP settings." There are two radio button options: "Obtain an IP address automatically" (unselected) and "Use the following IP address:" (selected). Below the selected option are three text boxes: "IP address:" containing "192 . 168 . 250 . 5", "Subnet mask:" containing "255 . 255 . 255 . 0", and "Default gateway:" containing "192 . 168 . 250 . 1". There are two more radio button options: "Obtain DNS server address automatically" (unselected) and "Use the following DNS server addresses:" (selected). Below the selected option are two text boxes: "Preferred DNS server:" containing "206 . 10 . 62 . 4" and "Alternate DNS server:" containing "206 . 10 . 62 . 3". A red arrow points to the "Preferred DNS server" text box. At the bottom right of the dialog is an "Advanced..." button. At the very bottom are "OK" and "Cancel" buttons.

9. In the now empty text boxes to the right of the labels “Preferred DNS Server” and “Alternate DNS Server” type in 66.242.88.4 and 66.242.89.4 respectively and then left click “Okay” in the lower right hand corner of the Internet Protocol (TCP/IP) Properties.



10. In the window labeled “Local Area Connection Properties” left click the button labeled “Close” in the lower right hand corner of the window.

